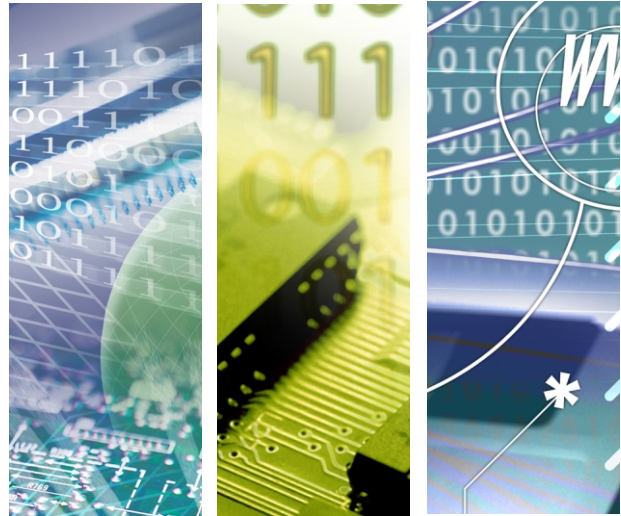
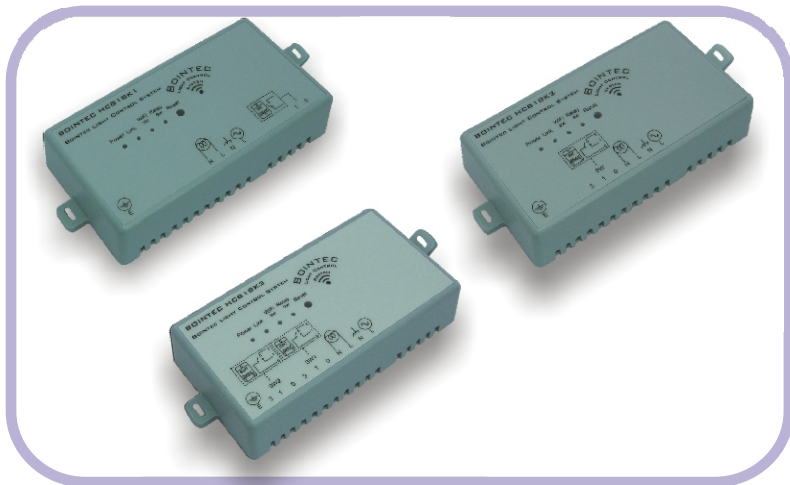




HC818K1/HC818K2/HC818K3

IoT Light Remote Control Box



HC818K Series

Smart home IoT lamp automatic control box

Introduction of Product

Bointec HC818K1/2/3 is a smart light controller to be installed between lamps and traditional on/off switch(es), in order to allow lamp to be controlled by WiFi radio.

Using by cutting edge Internet of Things technology, Bointec HC818K1/2/3 build-in WiFi radio TX/RX module and microprocessor. With the powerful hardware platform, HC818K1/2/3 could translate BLCP® (Bointec Light Control Protocol) command flow to instruct the connected lamp/bulb to perform on or off. With an Apple® or an Android® smart device by download Bointec netREMOCON® App, it allows you to control the lamp on/off status without walk close to the traditional ON/OFF switch that is on the wall.

You can now turn on and off the lamp with a long distance, up to 300 meters away. Accordingly, you could know if the lamp is on or off without walk into the room by look at the lamp status on the smart device.

Product Highlight

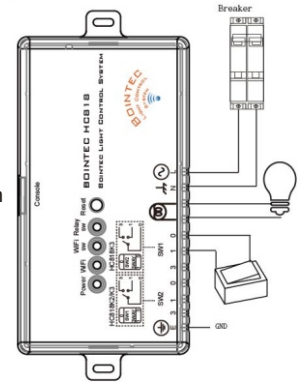
- Accept traditional on/off switch while with remote control command.
- Use Wifi technology to accept wireless remote control lamp on/off
- Maxmum carrying watt to be 110V/110W;220V/220W
- Minimum current watt could reach 1A
- Radio control distance 300m
- Universal power input AC 110~240V
- Operating trigger no less than 500,000 times



Feature	Specification
Material	
Material	Plastic
General	
Operating Voltage	AC 110-240V
Power consumption	Less than 1.0W
Maximum carrying Wattage	220W
Minimum carrying Wattage	1W
MTBF	100,000 times trigger
WiFi	
Radio Frequency band	2.4GHz (2.412 GHz to 2.484 GHz)2.4GHz
Standard	IEEE 802.11 b/g/n
Bandwidth	HT20 and HT40
Security Protocols	WPS, WPA, WPA2, WEP, TKIP
Antenna	1T1R
Environment	
Operating Temperature	-20°C ~ +80°C
Operating Humidity	20% ~ 80%
Dimension	
Product	98.4x52.4x18 mm
Certificate	
China	CMIIT(TBD)
Canada	IC
USA	FCC
Japan	Telec
Brazil	ANATEL(TBD)
Taiwan	NCC
Europe	EN 300 328 v1.9.1
Europe	CE
Other EMI Certifications	(by contact Bointec Sales)

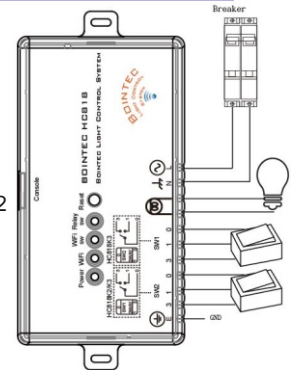
K1 Connection diagram

818K1 connect with a one-way switch

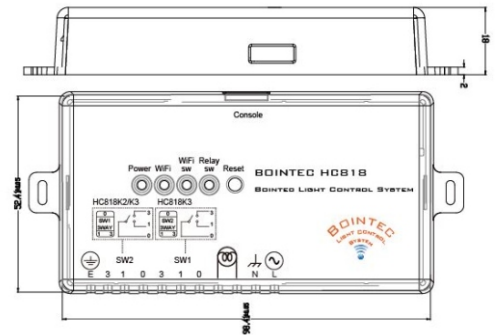


K3 Connection diagram

818K3 connect with three-way switch * 2



ME Drawing/placement



Ordering Information

PART NUMBER	DESCRIPTION
TFGA-HC818K10-11	finished non packaing,Bointec,HC818K1
TFGA-HC818K20-11	finished non packaing,Bointec,HC818K2
TFGA-HC818K30-11	finished non packaing,Bointec,HC818K3
T.HC818K1#1	HC818K1,Single, Bointec, brand packed
T.HC818K1#2	HC818K2,Single, Bointec, brand packed
T.HC818K1#3	HC818K3,Single, Bointec, brand packed
T.HC818K1-DK	HC818K1-DK,Single packed, Bointec packed, development kit packed
T.HC818K2-DK	HC818K2-DK,Single packed, Bointec packed, development kit packed
T.HC818K3-DK	HC818K3-DK,Single packed, Bointec packed, development kit packed



TAIJET BOINTEC CO LTD
 4F, #114, ZHOUI ST., NEIHU-TAIPEI 11493, TAIWAN
 TEL: +886-2-2759-0081 EMAIL: contact@bointec.com
 WWW.BOINTEC.COM

Bointec Authorized Distributer