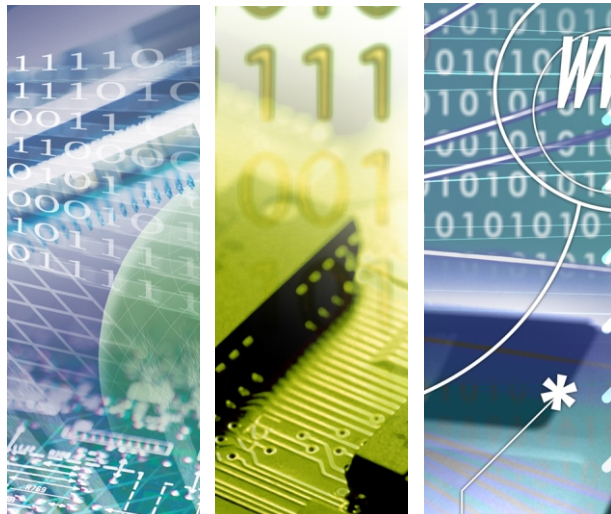




# HC811K

IoT light remote control set



HC811K

IoT light remote control set for E27 bulb receptacle / 802.11bgn

## Introduction of Product

Bointec HC811K is a smart light controller to be installed in E27 bulb, in order to allow bulb to be controlled by WiFi radio.

Using by cutting edge Internet of Thing technologies, Bointec HC811K build-in WiFi radio TX/RX module and microprocessor. With the powerful hardware platform, HC811K could translate BLCP® (Bointec Light Control Protocol) command flow to instruct the connected bulb/bulb to perform on or off.

With an Apple® or an Android® smart device by download Bointec netREMOCON® App, it allows you to control the bulb on/off status without walk close to the traditional ON/OFF switch that is on the wall. You can now turn on and off the bulb with a long distance, up to 300 meters away.

Accordingly, you could know if the bulb is on or off without walk into the room by look at the bulb status on the smart device. Imaging how simple 1-2-3 it is, just: 1. install HC811K by yourself to attach the bulb you like to control, 2. install netREMOCON® App in the smart device on your hand, and 3.run Instant Scan® from netREMOCON®.

Then, you have finished the setup procedure and start to enjoy the convenience. Moreover, with multiple smart devices, you could have multiple control outlets at a same time. With all of them precisely show the bulb on/off status.

## Product Highlight

- Accept traditional E27 bulb while with remote control command.
- Use WiFi technology to accept wireless remote control lamp on/off
- Maximum carrying watt to be 220W
- Minimum current watt could reach 1A
- Radio control distance 300m
- Universal power input AC 110~240V
- Operating trigger no less than 100,000 times

\*WiFi is the trademark of WiFi Alliance.

\*Android® is the trademark of Open Handset Alliance.

\*iOS® is the trademark of Apple Inc.

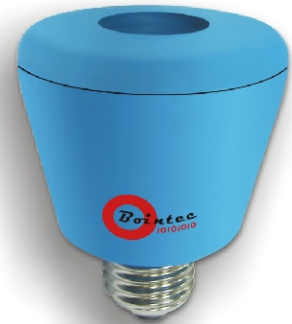
\*Base on IEEE802.11b standard, real environment might vary depend on radio signal quality.



# Specification

Feature	Specification
<b>General</b>	
Operating Voltage	AC 110-240V
Power consumption	Less than 1.0W
Maximum carrying Wattage	110V/110W;220V/220W
Minimum carrying Wattage	1W
MTBF	100,000 times trigger
<b>WiFi</b>	
Radio Frequency band	2.4GHz (2.412 GHz to 2.484 GHz)
Standard	IEEE 802.11 b/g/n
Security Protocols	WPA, WPA2, WEP
<b>Environment</b>	
Operating Temperature	-10°C ~ +65°C
Operating Humidity	20% ~ 80%
Storage Temperature	-20°C ~ +85°C
<b>Dimension</b>	
Product	70mmx70mmx88 mm
<b>Certificate</b>	
Canada	IC
USA	FCC
Japan	Telec
Brazil	ANATEL(TBD)
Taiwan	NCC
Europe	CE/EN 300 328 v1.9.1
Other EMI Certifications	(by contact Bointec Sales)
<b>Material</b>	
Material	Plastic

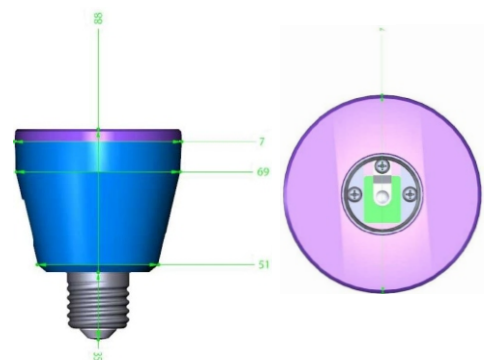
## Product quick glance



## Connection diagram



## ME Drawing/placement



## Ordering Information

PART NUMBER	DESCRIPTION
T.HC811K#1-B	HC811K1,1pcs, Blue, Bointec, brand packed
T.HC811K#1-G	HC811K1,1pcs, Green, Bointec, brand packed
T.HC811K#1-Y	HC811K1,1pcs, Yellow, Bointec, brand packed
T.HC811K#1-T	HC811K1,1pcs, Tangerine, Bointec, brand packed
T.HC811K#1-P	HC811K1,1pcs, Peach, Bointec, brand packed



**We are Your Partner more than Business**

TAIJET BOINTEC CO LTD  
 4F, #114, ZHOUI ST., NEIHU-TAIPEI 11493, TAIWAN  
 TEL: +886-2-2759-0081 EMAIL: contact@bointec.com  
 WWW.BOINTEC.COM

(C)BOINTEC. All rights reserved. Bointec & the Bointec logo are the trademarks of TAJET Bointec, which may be registered in some jurisdictions. All other brands and product names are registered trademarks of their respective holders. Information supplied by Bointec is believed to be accurate and reliable. Bointec assumes no responsibility for any errors in this brochure. Bointec reserves the right, without notice, to make changed in product design or specifications.

Bointec Authorized Distributer